

QUICK START GUIDE

Thank-you for your purchase!

You've made the decision to have full control of your vehicle. Follow the steps below to begin a new era of vehicle controls.

1. Ensure you have the Serial # for your device.
2. Visit our website and click on the "Activate" tab,
3. Select YOUR model number (device type) and and fully complete form

Once submitted you will receive a confirmation email from Northsat Distribution with the details of your device activation.

1 855 287 4477 autoconnectgps.com

TAKE CONTROL OF YOUR VEHICLES LIKE NEVER BEFORE!

- Start, Lock, Unlock, open your trunk (*AC202 Only)
- Know the vital statistics of your vehicle(s)
- Request a vehicle(s) Location On-Demand
- Monitor vehicle(s) for Aggressive Driving and Excessive Idling
- Know where your vehicle(s) went, and how they got there

ON ALL MAJOR PLATFORMS



INSTALLER PORTAL

1

DETERMINE INSTALLATION TYPE

When installing an Autoconnect device you must first determine the installation type. The following pages will help you determine the type and instructions for installation.

2

INSTALL YOUR AUTOCONNECT GPS MODEM

- Choose proper installation location ensuring to follow instructions on install guide
- Determine with customer if installation is to be stealth (not visible)
- Have label facing the sky and clear from any metal above it.
- Actual location will vary by vehicle year, make and model.

TIP

WE RECOMMEND AFFIXING THE SID STICKER TO THE DOOR JAMB OF THE VEHICLE

3

TEST THE DEVICE FUNCTIONS

TIP

Choose the proper communication Protocol depending on installation type before sending any test command

- Click on the **Login** link at the top of any page of the autoconnectgps.com website or download the free App for your mobile device.
- Each Device comes with "TEST DATA" for you to test all functions. This data will expire a few days after installation.
- Use the SID# for USERNAME and PASSWORD.



Username

Password

AC202

QUICK INSTALL GUIDE

Attention: This modem is shipped temporarily pre-activated for the installer to send up to 50 test commands before having to send in the activation form.

STEP 1: Determine Installation Type and Options

Depending upon your requirements, the AC202 module can be installed in a variety of ways.

Type 1 – Standalone GPS Tracking	Type 6 – ADS iDatastart (Classic, BM&BZ, VWx, HCx)
Type 2 – Solace / Titan Elite Remote Starter	Type 7 – DEI (DBALL2/3, 4x10 / 5x10)
Type 3 – Fortin EVO-ALL (Standalone FW)	Type 8 – DEI (REMOTE STARTERS with ESP2)
Type 4 – Fortin EVO-ONE	Type 9 – Mid City (SKSNxxx)
Type 5 – ADS AL-CA (Standalone FW)	

STEP 2: Complete the wire connections according to the selected Installation Type.

Please see the following pages for detailed instructions and wiring diagrams.

STEP 3: Position the AC202 Module in an Optimal Location

Failure to adhere to these suggestions will result in a weak cellular and/or GPS signal and will affect the performance of the device.

- Secure in upper portion of dash in a hidden location with correct side pointing skyward .(label will indicate proper orientation)
- Do not cover with metal or position near any source of interference (Vehicle Radio, BCM). Keep a safe distance of at least 24".

STEP 4: Confirm LED Status

Yellow:	2 Flashes / Second	Connected / Online
Green:	1 Flash / Second	Valid GPS

STEP 5: Confirm Vehicle Connectivity and GPS location

Each AC202 device is shipped pre-activated for the installer to send up to 50 test commands before having to complete the online activation form. It is HIGHLY recommended that you follow one of the test procedures below to ensure proper functionality. Alternatively you can call Certified Tracking Solutions and we will perform the test with you.

For Live Tech Support:
Call Certified Tracking Solutions at 1-780-391-3800.
Toll Free 1-855-287-4477(CTS-4GPS)
Monday to Friday 8AM to 5PM MST
AutoConnectGPS.com

Test procedure

1) Login to view and test the AC202 device

A: via the AutoConnect website

B: via the AutoConnect Smartphone App

a) Go to www.AutoconnectGPS.com and click on "Customer Login"

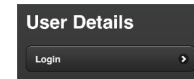
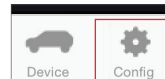


b) Enter the AC202's Serial# (ESN) for both the User Name and password.
c) Click Login.

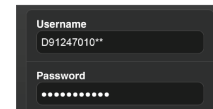


The AutoConnect website dashboard should load and display the Serial number of the AC202 device that you are installing.

a) Download the AutoConnect Smartphone app by searching "Autoconnect GPS" for iPhone, Android or Blackberry
b) Open App and click on "Config" then "Login"



c) Enter the AC202's Serial# (ESN) for both the User Name and password.



d) Click "Save"



2) Test Vehicle GPS Connectivity

A: via the AutoConnect website

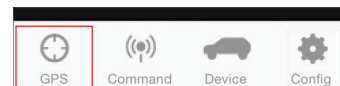
B: via the AutoConnect Smartphone App

The successful completion of this section will enable you to see the current position of the AC202 device on the dashboard/Smartphone map.

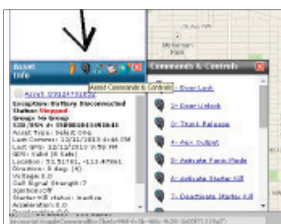
a) Click on device serial # on the left side of the screen. The asset info box will open on the bottom left corner of the screen.



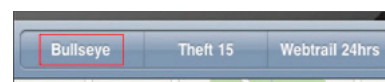
a) Click on the "GPS" tab



b) Click on the "Asset Commands & Controls" icon located at the top of the Asset Info box*

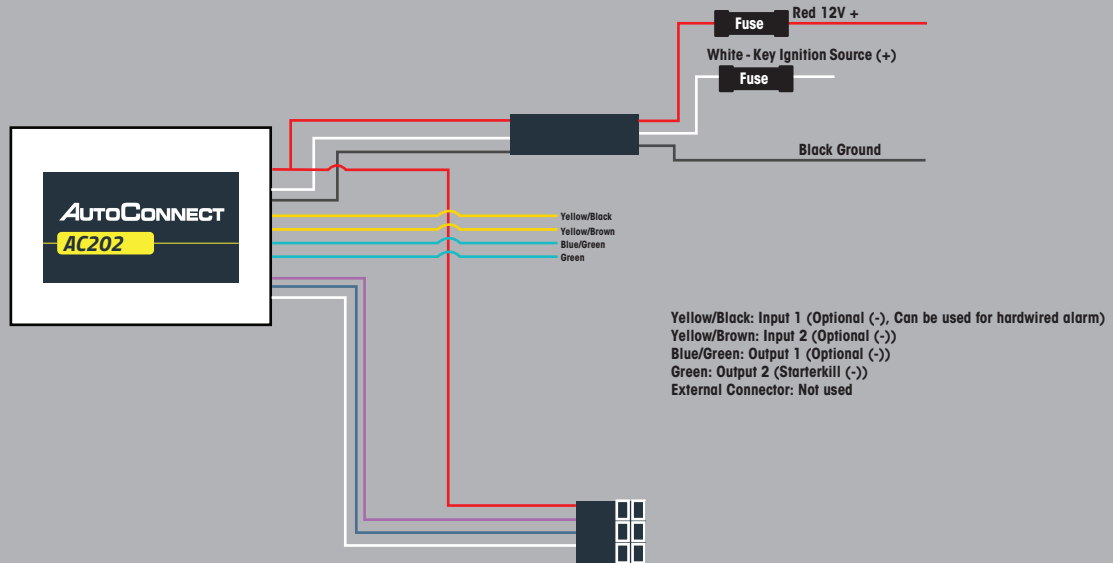


b) Click on the "Bullseye" button at top left of screen



*if using Type 2 to Type 9 please ensure you have selected appropriate data protocol

Standalone GPS Tracking



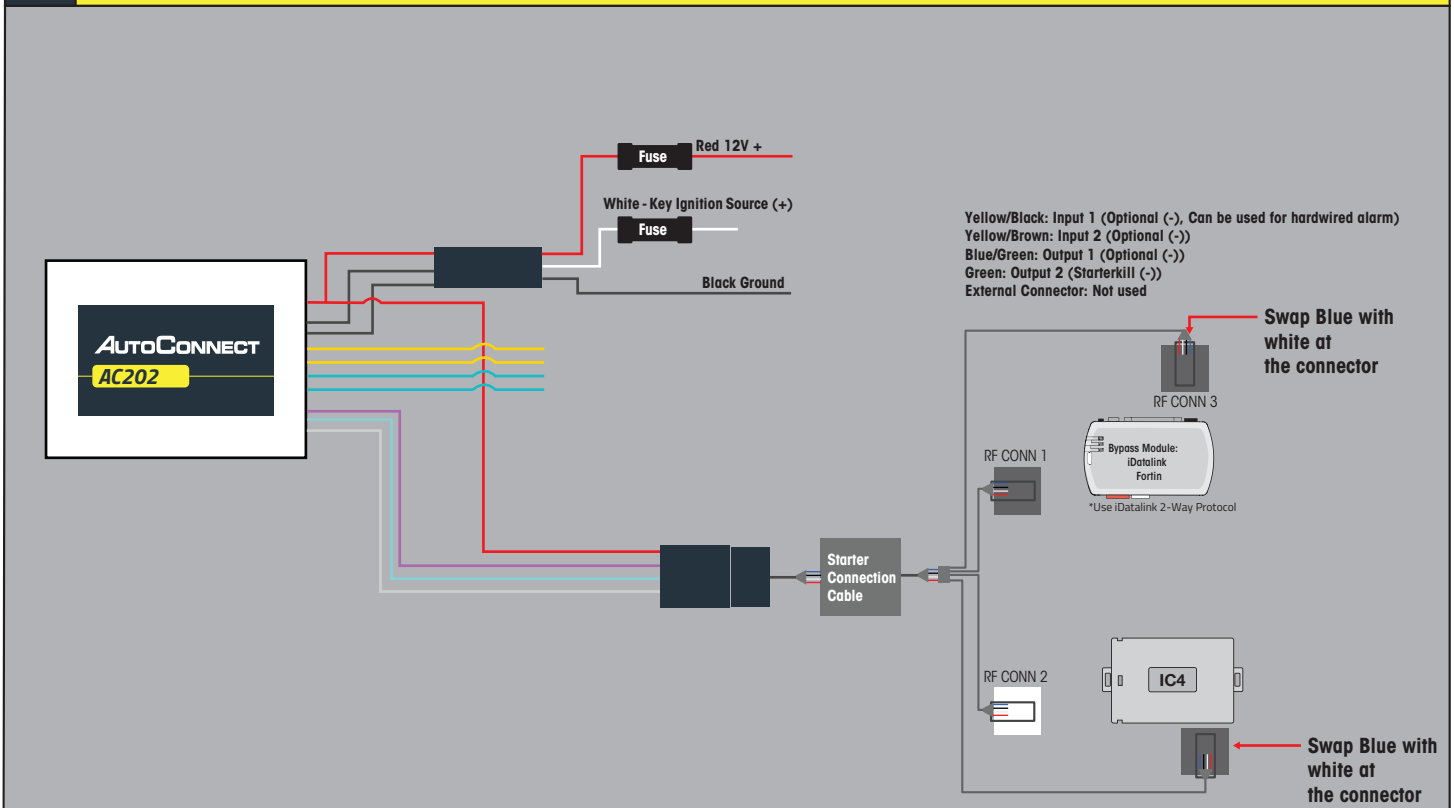
Installation Steps

1. Install AC202 as per diagram above.
2. Mount the Autoconnect module as described in the Autoconnect Install guide Step 3.
3. Install hardwired ignition recommended for this type of install

Programming and Testing

1. Open the Autoconnect App or Dashboard
2. Log in to the Autoconnect device installed using the SID # as both username and password.
3. Go to the command tab on the bottom of the app, or the remote function of the dashboard
4. Test GPS Tracking functions
5. We recommend affixing the SID Sticker to the door jamb of the vehicle.

Solace / Titan Elite Remote Starter



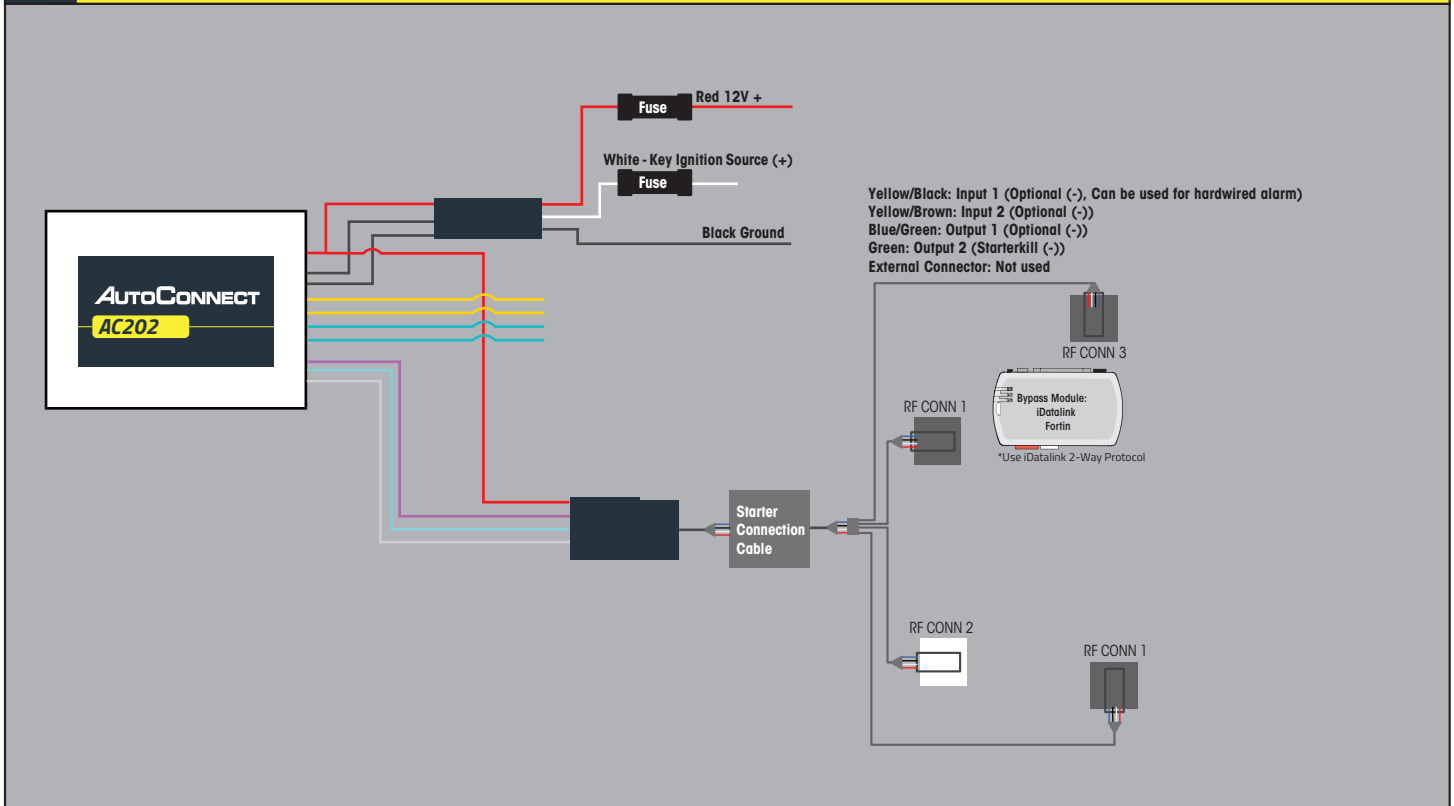
Installation Steps

1. Ensure you have swapped the blue and white wire on connector
2. Complete installation of Remote Starter (R.S.) including programming the bypass module in the appropriate DATA protocol *For Fortin modules you must switch the protocol using the Flashlink Manager. Turn option F2 AP/OFA to "ON". If you do not have a Flashlink Manager you must hardwire all connections between the bypass module and R.S.
3. Program R.S. for M2-11-1(iDatalink 2-way) for Fortin and iDatalink modules.
4. Connect the 2 RF Conn 1, one to the Bypass Module and the other one to the IC4. You will need the extension cable "Starter Connection Cable" available from CTS Tracking.
5. Mount the Autoconnect module as described in the Autoconnect Install guide Step 3.
6. For true voltage cut and hardwire the Red, Black, and White directly from the Autoconnect device to the vehicle.*DO NOT CUT THE DATALINK CABLE

Programming and Testing

1. Open the Autoconnect App or Dashboard
2. Log in to the Autoconnect device installed using the SID # as both username and password.
3. Go to the command tab on the bottom of the app, or the remote function of dashboard
4. Scroll to the bottom of the commands and send the required Installer Protocol.
5. For iDatalink and Fortin Modules select "Set Telematic Protocol". This option is by default
6. Test all the application functions (Start, Stop, Lock, Unlock, Auxiliaries, ETC. GPS).
7. We recommend affixing the SID Sticker to the door jamb of the vehicle.

Fortin EVO-ALL (Standalone FW)



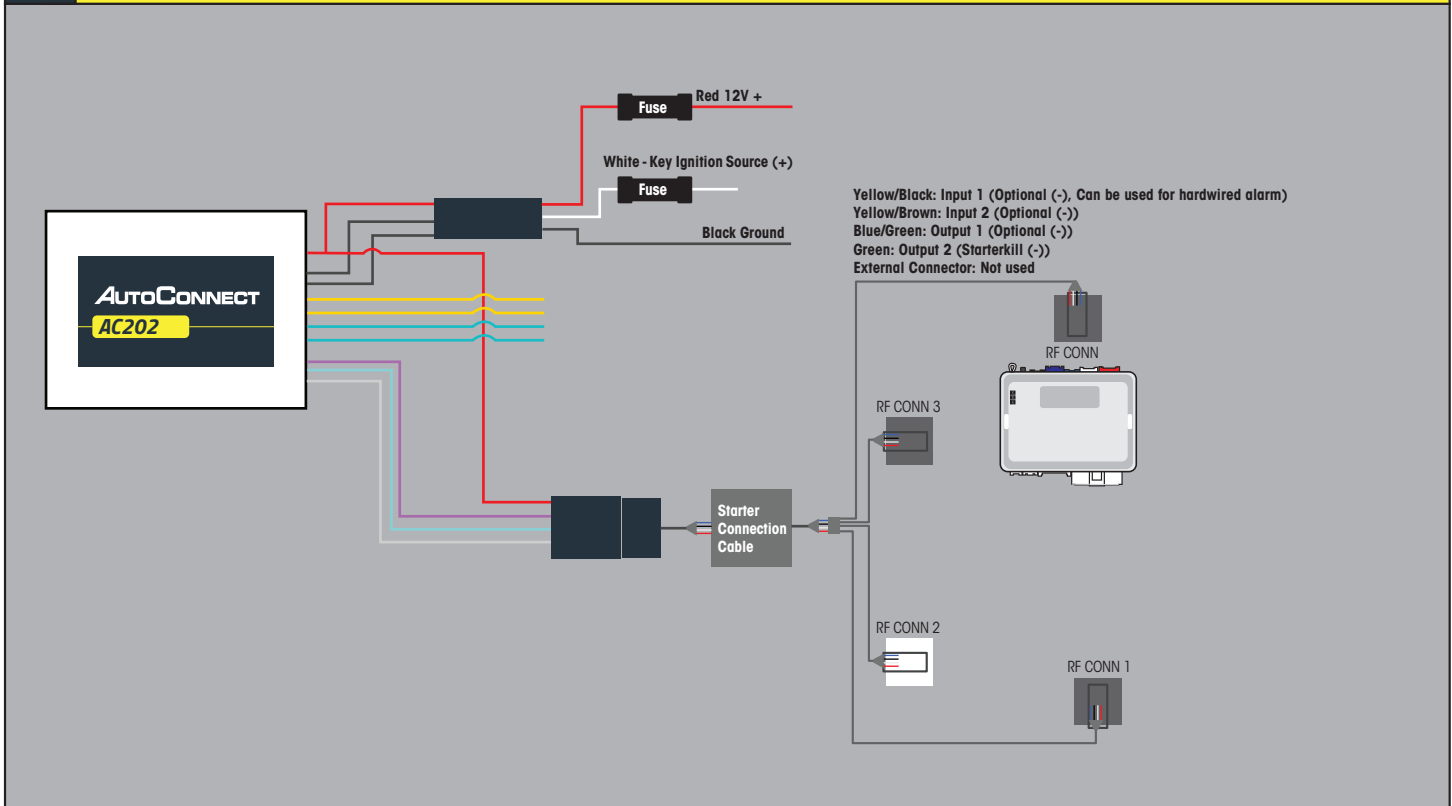
Installation Steps

1. Program EVO-ALL as per Fortin installation instructions for vehicle. (Ensuring to select option H2 in Flashlink Manager) or visit http://fortin.ca/download/20101/autoconnect_evo-all.pdf
2. Complete installation as per Fortin installation diagram including the programming of the bypass module.
3. Connect Data link cable to the Bypass Module. You will need the extension cable "Starter Connection Cable" available from CTS Tracking.
4. Powering the AC202 module and Bypass module
5. Scroll to the bottom of the commands and send the required Installer Protocol.
6. For Fortin EVO-ALL select "Set Fortin Protocol".
7. Program the Autoconnect to Fortin module by performing the following:
 - Hold programming button while inserting datalink cable to EVO-ALL. Release button when Blue & Red LED's Turn on
 - Press & hold the programming button on the EVO-ALL (The LED's will turn off then back on approx 5 seconds), release button
 - Turn Ignition ON (ALL 3 LED's should be on now)
 - Send the Lock command from the Autoconnect. The Blue and Red LED's should flash once. | Turn Ignition OFF
8. Mount the Autoconnect module as described in Autoconnect Install.

Programming and Testing

1. Open the Autoconnect App or Dashboard
2. Log in to the Autoconnect device installed using the SID # as both username and password.
3. Go to the command tab on the bottom of the app, or the remote function of dashboard
4. Test all the application functions (Start, Stop, Lock, Unlock, Auxiliaries, ETC. GPS).
5. We recommend affixing the SID Sticker to the door jamb of the vehicle.

Fortin EVO-ONE



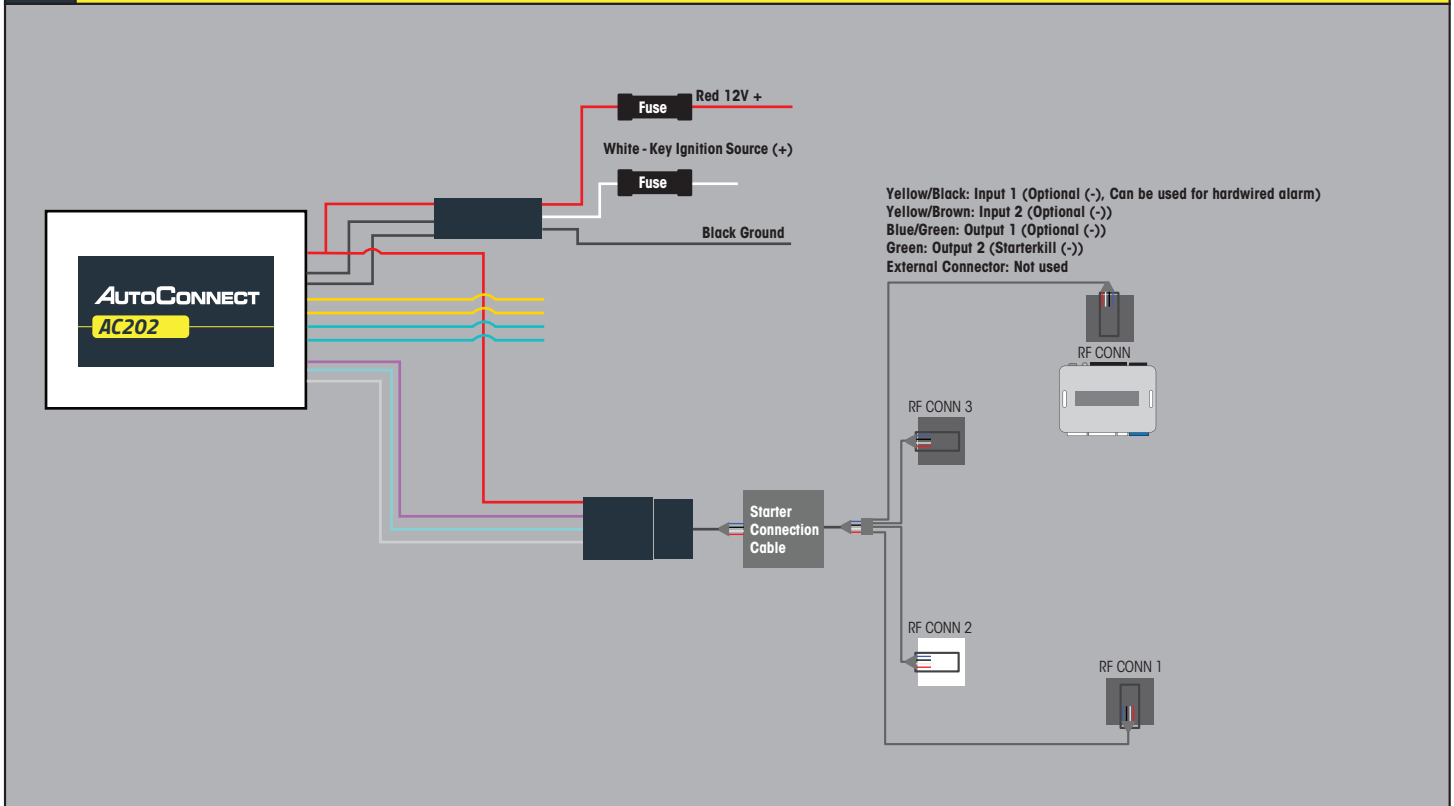
Installation Steps

1. Program EVO-ONE as per Fortin installation instructions for vehicle (Ensuring to select option H2 in Flashlink Manager) or visit http://fortin.ca/download/26701/autoconnect_evo-one.pdf
2. Complete installation as per Fortin installation diagram.
3. Connect Data link cable to the Bypass Module. You will need the extension cable "Starter Connection Cable" available from CTS Tracking.
4. Connect Power, Ground and Ignition from AC202 if you want to use true voltage.
5. Scroll to the bottom of the commands and send the required Installer Protocol.
6. For Fortin EVO-ONE select "Set Fortin Protocol".
7. Program the Autoconnect to Fortin module by performing the following:
 - Turn Ignition On.
 - Press and hold the Valet switch until LED flashes then release. Then press Valet switch 5x.
 - Press and release the brake pedal.
 - Send the Lock command from the Autoconnect. The park lights will flash once to confirm.
 - Press and release the brake pedal then turn ignition OFF.
8. Mount the Autoconnect module as described in the Autoconnect Install guide Step 3.

Programming and Testing

1. Open the Autoconnect App or Dashboard
2. Log in to the Autoconnect device installed using the SID # as both username and password.
3. Go to the command tab on the bottom of the app, or the remote function of dashboard
4. Test all the application functions (Start, Stop, Lock, Unlock, Auxiliaries, ETC. GPS).
5. We recommend affixing the SID Sticker to the door jamb of the vehicle.

ADS AL-CA (Standalone FW)



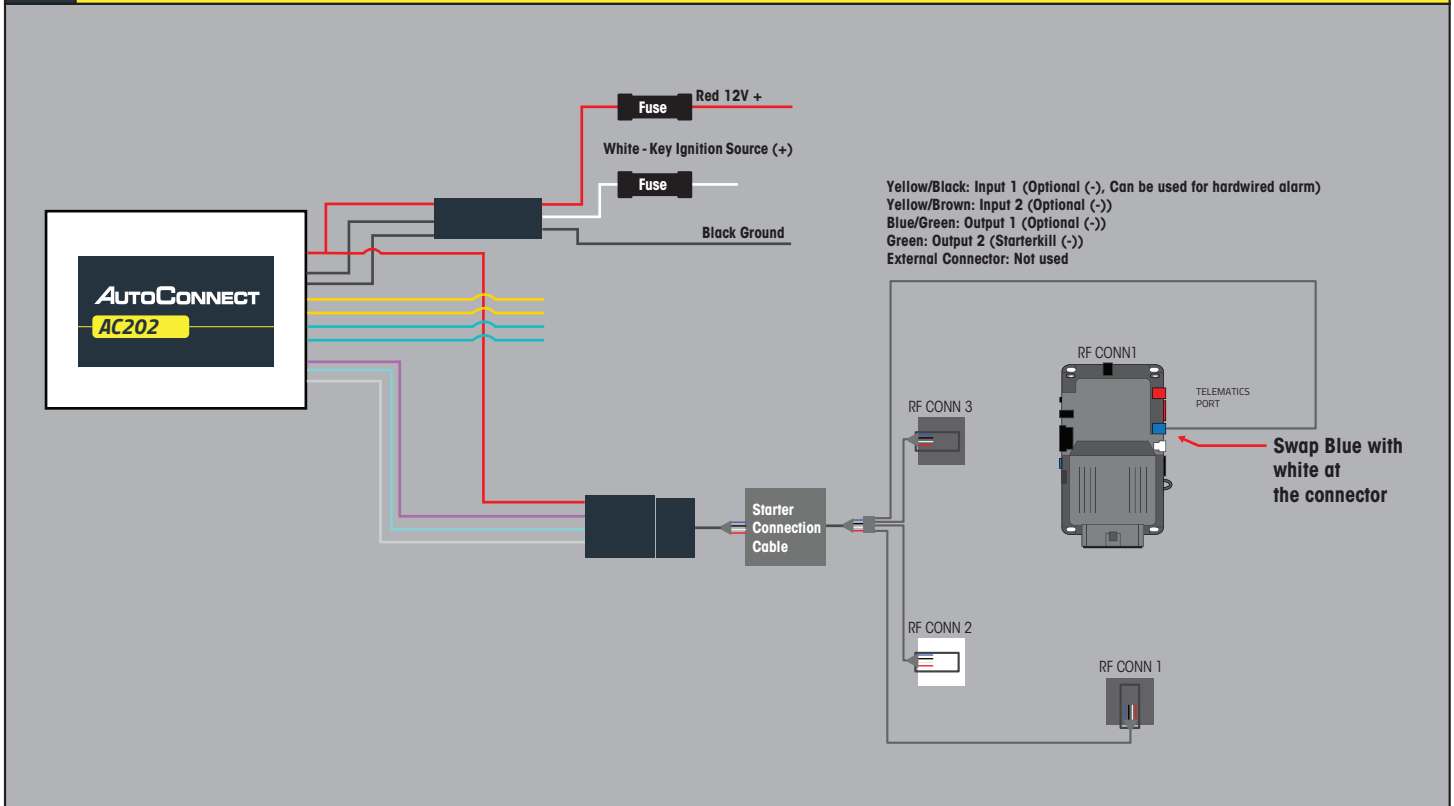
Installation Steps

1. Program ADS-AL-CA as per iDatalink instructions for vehicle using a Weblink cable and choose Drone Telematics Kit.
2. Complete installation as per iDatalink installation diagram.
3. Connect Data link cable to the Bypass Module. You will need the extension cable "Starter Connection Cable" available from CTS Tracking.
4. Connect Power, Ground and Ignition from AC202 if you want to use true voltage.
5. For true voltage cut and hardwire the Red, Black, and White directly from the Autoconnect device to the vehicle.
*DO NOT CUT THE DATALINK CABLE
6. Mount the Autoconnect module as described in the Autoconnect Install guide Step 3.

Programming and Testing

1. Open the Autoconnect App or Dashboard
2. Log in to the Autoconnect device installed using the SID # as both username and password.
3. Go to the command tab on the bottom of the app, or the remote function of dashboard
4. Scroll to the bottom of the commands and send the required Installer Protocol.
5. For ADS-AL-CA select "Set ADS Protocol".
6. Test all the application functions (Start, Stop, Lock, Unlock, Auxiliaries, ETC. GPS).
7. We recommend affixing the SID Sticker to the door jamb of the vehicle.

ADS iDatastart (Classic, BM&BZ, VWx, HCx)



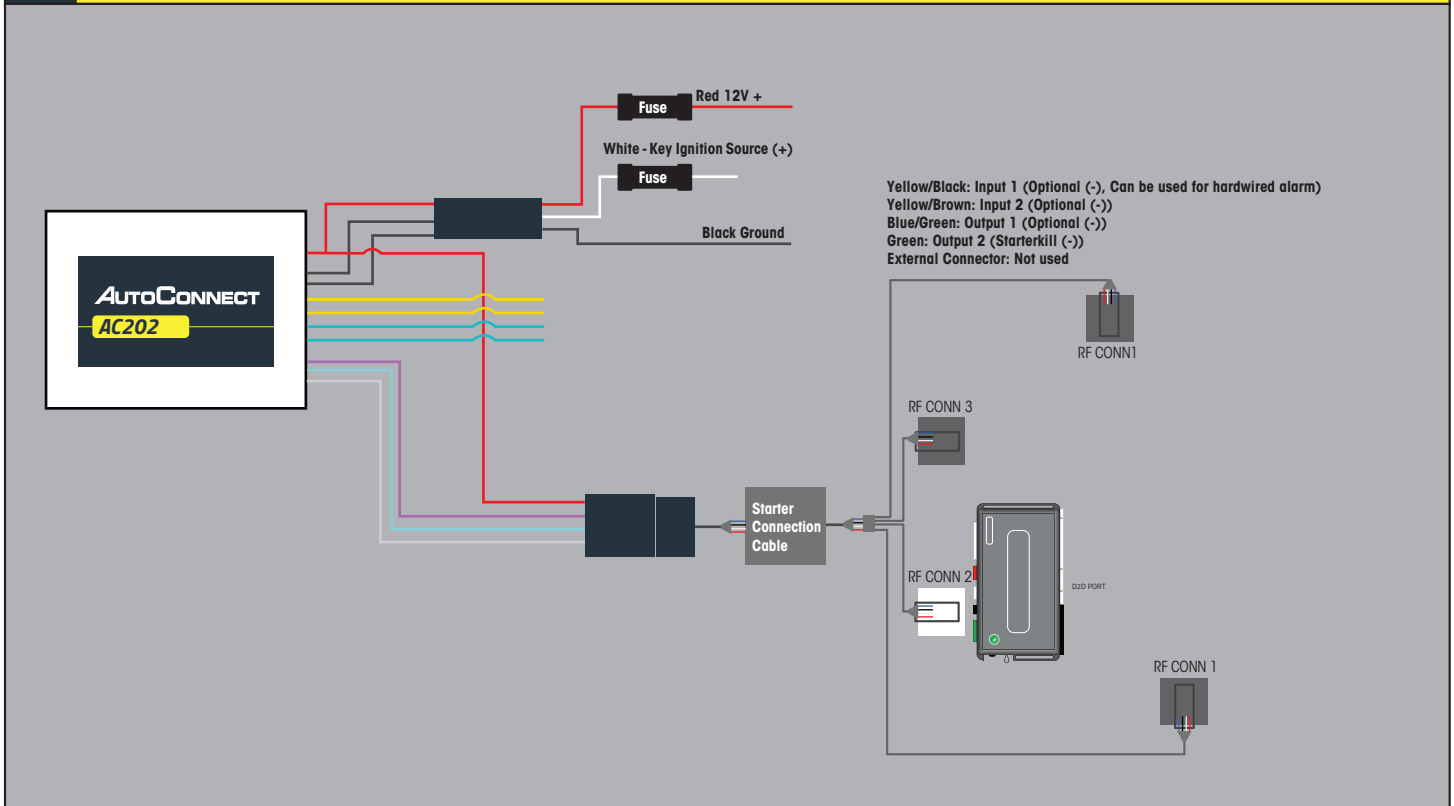
Installation Steps

1. Ensure you have swapped the blue and white wire on connector
2. Program iDATASTART as per iDataLink instructions for vehicle using a Weblink cable and choose Drone Telematics Kit.
3. Complete installation as per iDataLink installation diagram.
4. Connect Data link cable to the Bypass Module. You will need the extension cable "Starter Connection Cable" available from CTS Tracking.
5. Connect Power, Ground and Ignition from AC202 if you want to use true voltage.
6. Mount the Autoconnect module as described in the Autoconnect Install guide Step 3.

Programming and Testing

1. Open the Autoconnect App or Dashboard
2. Log in to the Autoconnect device installed using the SID # as both username and password.
3. Go to the command tab on the bottom of the app, or the remote function of dashboard
4. Scroll to the bottom of the commands and send the required Installer Protocol.
5. For iDatastart Modules select "Set Telematic Protocol".
6. Test all the application functions (Start, Stop, Lock, Unlock, Auxiliaries, ETC. GPS).
7. We recommend affixing the SID Sticker to the door jamb of the vehicle.

DEI (DBALL2/3, 4x10 / 5x10)



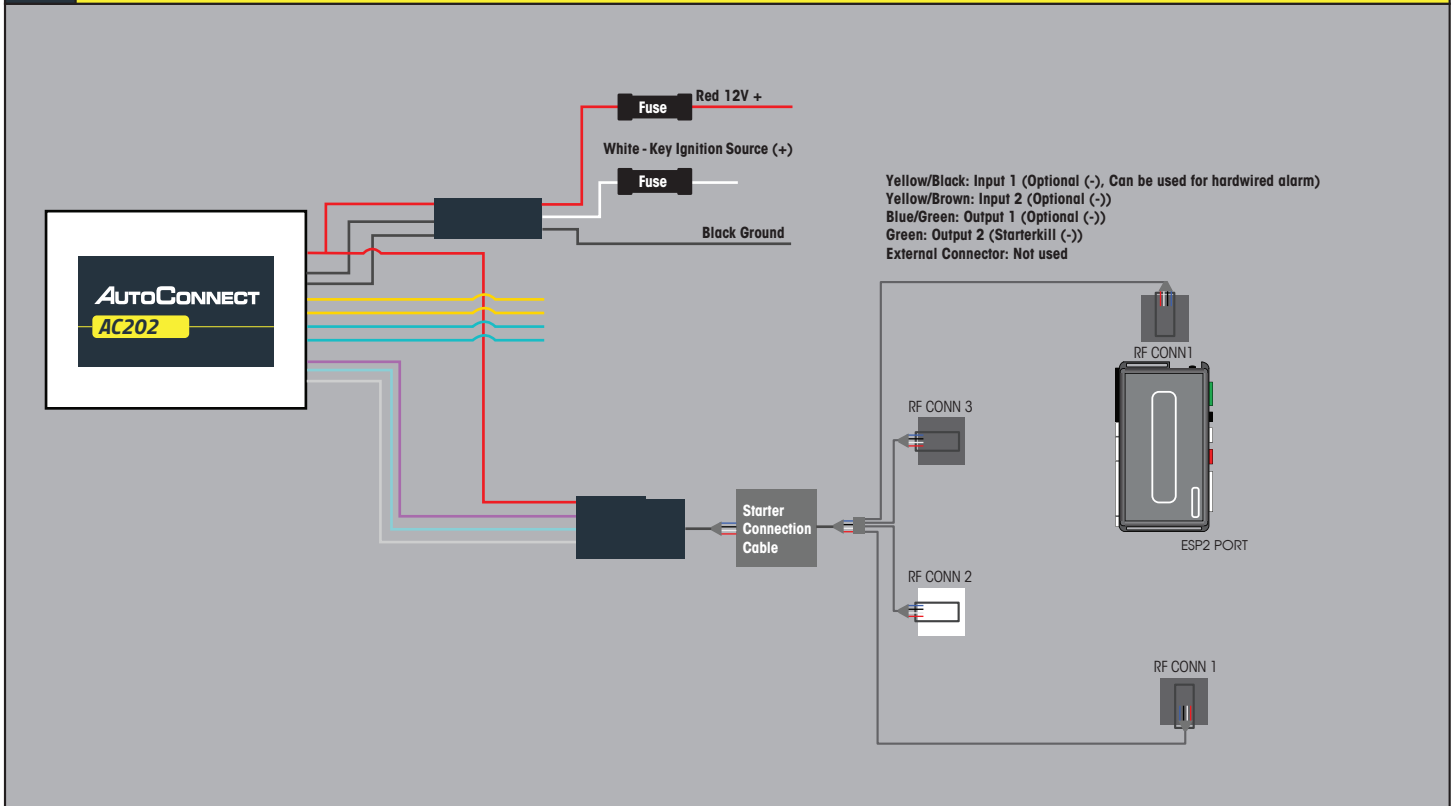
Installation Steps

1. Program DEI Module as per installation instructions for vehicle (Ensure to have the SMART START Option ENABLED)
2. Complete installation as per installation diagram.
3. Connect Data link cable to the Bypass Module. You will need the extension cable "Starter Connection Cable" available from CTS Tracking.
- 3b. Connect Power, Ground and Ignition. Ignition must be connected
4. Mount the Autoconnect module as described in the Autoconnect Install guide Step 3.

Programming and Testing

1. Open the Autoconnect App or Dashboard
2. Log in to the Autoconnect device installed using the SID # as both username and password.
3. Go to the command tab on the bottom of the app, or the remote function of dashboard
4. Scroll to the bottom of the commands and send the required Installer Protocol.
5. For DEI Modules select "Set D2D Protocol".
6. Test all the application functions (Start, Stop, Lock, Unlock, Auxiliaries, ETC. GPS).
7. We recommend affixing the SID Sticker to the door jamb of the vehicle.

DEI (REMOTE STARTERS with ESP2)



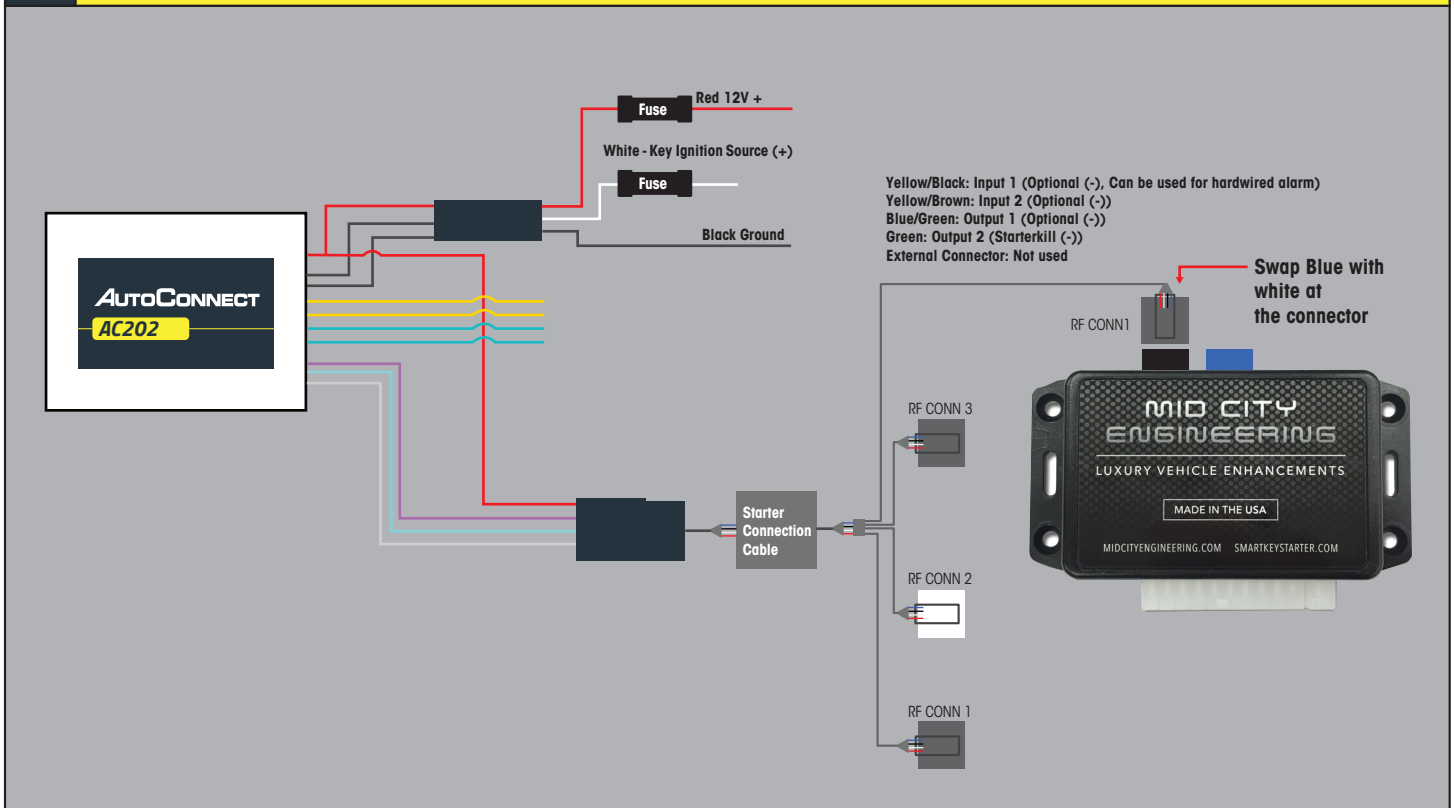
Installation Steps

1. Complete R.S Installation
2. Connect Data link cable from AC202 to ESP2 Port on DEI Module Cable for ESP2 Port is required, but provided by CTS tracking solutions 12V, GROUND, & IGNITION MUST BE HARDWIRED TO VEHICLE.
3. Mount the Autoconnect module as described in the Autoconnect Install guide Step 3.

Programming and Testing

1. Open the Autoconnect App or Dashboard
2. Log in to the Autoconnect device installed using the SID # as both username and password.
3. Go to the command tab on the bottom of the app, or the remote function of dashboard
4. Scroll to the bottom of the commands and send the required Installer Protocol.
5. For DEI Modules select "Set ESP Protocol" 3 (D2D)
6. Test all the application functions (Start, Stop, Lock, Unlock, Auxiliaries, ETC. GPS).
7. We recommend affixing the SID Sticker to the door jamb of the vehicle.

Mid City (SKSNxxx)



Installation Steps

1. Swap Pin for cable Blue and white on cable.
2. Complete installation as per Mid City installation instructions and chose Drone Telematic kit if needed.
3. Connect the Starter Connection Cable to the Black connector on the Mid City starter. Do not connect to blue connector
4. The power, hardwire, and ground are optional on the AC202, assuming the Mid City provide power and ground.

Programming and Testing

1. Open the Autoconnect App or Dashboard
2. Log in to the Autoconnect device installed using the SID # as both username and password.
3. Go to the command tab on the bottom of the app, or the remote function of dashboard
4. Scroll to the bottom of the commands and send the required Installer Protocol.
5. For Mid Modules select "Set Telematic Protocol".
6. Test all the application functions (Start, Stop, Lock, Unlock, Auxiliaries, ETC. GPS).
7. We recommend affixing the SID Sticker to the door jamb of the vehicle.

SUPPORTED FUNCTIONS BY DEVICE TYPE

MANUFACTURER	SOLACE / TITAN	EVO-ALL/ONE	4X10 / 5X10 (D2D)	DBALL (D2D)	Viper S/A (W/ESP2)	iDatastart (TELE)	MID-CITY ENG (ALL GEN)
PROTOCOL VERSION REQUIRED	(SO / TI)	(FoRF)	(DEI 1)	(DEI 1)	(ESP)	(ADS)	(ADS)
DOOR LOCK	Y	Y	Y	Y	Y	Y	Y
DOOR UNLOCK	Y	Y	Y	Y	Y	Y	Y
TRUNK RELEASE	Y	Y	Y	Y	Y	Y	Y
AUX OUTPUT	Y	Y	Y	Y	Y	Y (START/STOP)	Y
IGNITION ON/OFF W/ TAKEOVER	Y		Y	Y	Y	Y	Y
RUNTIME ON START	Y	Y	N	N	N	Y	Y
ACTIVATE PANIC MODE	Y	N/Y (EVO-ONE)	N	N	Y	Y	Y
ACTIVATE STARTER KILL	Y(AC202)	Y(AC202)	Y(AC202)	Y(AC202)	Y(AC202)	Y(AC202)	Y(AC202)
DEACTIVATE STARTER KILL	Y(AC202)	Y(AC202)	Y(AC202)	Y(AC202)	Y(AC202)	Y(AC202)	Y(AC202)
TEMPERATURE REQUEST	Y	N/Y (EVO-ONE)	N	N	N	NOT SUPPORTED	NOT SUPPORTED
VOLTAGE REQUEST	Y(AC202)	Y(AC202)	Y(AC202)	Y(AC202)	Y(AC202)	Y(AC202)	Y(AC202)
BULLS EYE POSITION REQUEST	Y(AC202)	Y(AC202)	Y(AC202)	Y(AC202)	Y(AC202)	Y(AC202)	Y(AC202)
AUXILIARY 1	Y(IF APPLICABLE)	Y(IF APPLICABLE)	Y(IF APPLICABLE)	Y(IF APPLICABLE)	Y(IF APPLICABLE)	Y(IF APPLICABLE)	Y(IF Vehicle Supports)
AUXILIARY 2	Y(IF APPLICABLE)	Y(IF APPLICABLE)	Y(IF APPLICABLE)	Y(IF APPLICABLE)	Y(IF APPLICABLE)	Y(IF APPLICABLE)	Y(IF Vehicle Supports)
AUXILIARY 3	Y(IF APPLICABLE)	Y(IF APPLICABLE)	Y(IF APPLICABLE)	Y(IF APPLICABLE)	Y(IF APPLICABLE)	Y(IF APPLICABLE)	Y(IF Vehicle Supports)
AUXILIARY 4	Y(IF APPLICABLE)	Y(IF APPLICABLE)	Y(IF APPLICABLE)	Y(IF APPLICABLE)	N	Y(IF APPLICABLE)	Y(IF Vehicle Supports)
AUXILIARY 5	Y (P. THRU)	N	N	N	N	N	N
AUXILIARY 6	Y (P. THRU)	N	N	N	N	N	N
CAR FINDER	Y	N	N	N	N	N	N
EXTEND RUN TIME	Y	Y (Reset to Set time)	N	N	N	N	N
RUN TIME REMAINING	Y	Y	N	N	N	Y	Y
STOP REMOTE STARTER	Y	Y	Y	Y	Y	Y	Y
VALET MODE: ENTER	Y	N (NOT SUPPORTED)	N (NOT SUPPORTED)	N (NOT SUPPORTED)	N (NOT SUPPORTED)	N (NOT SUPPORTED)	N (NOT SUPPORTED)
VALET MODE: EXIT	Y	N (NOT SUPPORTED)	N (NOT SUPPORTED)	N (NOT SUPPORTED)	N (NOT SUPPORTED)	N (NOT SUPPORTED)	N (NOT SUPPORTED)
ALARM SOUNDING	Y	Y	Y	Y	Y	Y	N
INTRUSION DOOR	Y	Y	Y	Y	Y	Y	N
INTRUSION TRUNK	N	Y	Y	Y	Y	Y	N
INTRUSION HOOD	Y	Y	Y	Y	Y	Y	N
ALARM SOUNDING IGNITION	N	Y	Y	Y	Y	Y	N
FAILED START HOOD	Y	Y (GENERAL)	N	N	N	Y	N
FAILED START BRAKE	Y	Y (GENERAL)	N	N	N	Y	N
FAILED START TACH	Y	Y (GENERAL)	N	N	N	Y	N
FAILED START VALET	Y	Y (GENERAL)	N	N	N	Y	N
FAILED START RESERVATION	Y	Y (GENERAL)	N	N	N	N	N